



EDEN'S  
**HOME  
COMING  
2023**





# WITH A HOME THEY CAN ACHIEVE EVERYTHING

Miracles happen every day at EDEN. Steady jobs are found. Degrees are earned. Families are reunited. Why? Because people who were experiencing a housing crisis finally have a secure, safe place to call home.

It happens because of you!

*Thank you!*



# WELCOME!

**It's time to celebrate the importance of COMING HOME!!**

Finding a safe, secure place to call home has been critical for the ~5,000 households EDEN served this last year and those who we will provide housing to in the future.

Having a home serves as a foundation to build stable lives, advance independence, and fulfill aspirations. Stable and affordable housing provides security, self-worth, and dignity.

This doesn't happen without a staff who possesses an unwavering passion for our mission, a board of directors who are dedicated to our vision and progress, partners who leverage their own skills and resources, and supporters, like you, who devote their time and treasure to help us combat homelessness and housing insecurity in our region.

Tonight, we say 'thank you' to all who believe that coming home transforms lives and enables our neighbors to lay the foundation for stability and "life wins"!



Elaine Gimmel

Executive Director



# Oswald is proud to support EDEN

[OswaldCompanies.com](https://www.OswaldCompanies.com)

855.4OSWALD



© Oswald Companies. All rights reserved. DS2867



property & casualty  
employee benefits  
life insurance  
retirement plan services

**oswald**<sup>®</sup>

A UNISON RISK ADVISORS Company





# AGENDA

We are delighted you have joined us!

6:00 Cocktail Reception & Hors d'Oeuvres

HOMECOMING Activities:

Music & Mingling

Photo Booth

Raffle Ticket Selections

50/50 Raffle Purchases

7:00 Dinner

7:30 Program

8:00 HOMECOMING Activities & Dancing

9:15 Prize Raffle Drawings

50/50 Raffle Drawing

Last Call

9:30 Bar Closes

10:00 End of Event



**Cuyahoga Transition Age Youth**  
Cleveland, OH



**Harper's Pointe**  
Cleveland, OH

## **John G. Johnson Construction**

is proud to support EDEN's mission of providing housing solutions to people facing the challenges of housing insecurities and homelessness.



Scan to learn more or visit [johnjohnson.com](http://johnjohnson.com)



Construction Management | Design/Build | General Contracting

# HOMECOMING COURT

## EMILIE



*Class of 2021*

*Program:  
Permanent  
Supportive  
Housing,  
Emerald Commons*

Emilie is so grateful for her apartment at Emerald Commons, and it's tempting to stay cocooned in there. "It's hard to adjust to being normal when you haven't been able to do that for so long. I am really trying to adapt to a new routine, cooking my own meals and making friends. I try to do all the activities they have here, and I really like the art sessions."

Her friends include a lot of the younger residents at Emerald Commons. They toss a foam football on the lawn, sit in the sun, and walk to Edgewater Beach. She also wants to become more involved in the LGBTQ Center. A couple of months ago, Emilie adopted an adorable rescue dog named Evan. He is really friendly, full of energy, and a great companion for her.

Five years from now, she sees herself directing her own movie. She's currently writing "a tragic love story" that she would like to see produced. But until then, Emilie will be enjoying meeting new friends and enjoying life.





EDEN'S  
**HOME  
COMING  
2023**

# EDEN Housing

**You truly are "People Helping People".**

Your unwavering dedication to providing safe and secure housing and helping people transform their lives is something worth celebrating!

Your efforts make where we live  
and work a better place!

**Thank you for all you do!**

All your friends at Starfish Computer Corporation.



[starfishcomputer.com](http://starfishcomputer.com)

# HOMECOMING COURT

## HEATHER



*Class of 2021*

*Program:  
Permanent  
Supportive  
Housing,  
Harper's Pointe*

Heather spends their days volunteering at Franklin Circle and Harper's Pointe. This spring, they took charge of helping to prepare the garden. They helped to clear weeds and planted tomatoes, onions, cucumbers, sweet peas, watermelons, cantaloupe and more. They also spend quite a bit of time working on their own creative projects.

In August, they were hired as a full-time baggage handler for American Airlines at Cleveland Hopkins Airport. "I make a good wage and I have excellent benefits!" When not working, they walk and stay active to keep up the progress they've made in their health. Earlier this year, they participated in the Pride in the CLE event, marching with their church.

"Harper's Pointe has been a huge blessing for me," they say. "I am healthier and more active than I have been in a long time thanks to all the support I have here. It's amazing how much my life has changed because of the people who have helped me reach my goals!"

# CROSS ROADS

The logo for RE/MAX is depicted as a hot air balloon with a red and white striped top section containing the text 'RE/MAX' in blue, and a blue bottom section. The balloon is positioned between the words 'CROSS' and 'ROADS' in the main title.

**We are honored to play a part in helping those experiencing homelessness and housing instability.**

**Serving NE Ohio with 200 full-time, professional real estate agents in 8 locations, helping clients achieve the American dream of home ownership.**

**[www.remaxcrossroadsOhio.com](http://www.remaxcrossroadsOhio.com)**



# HOMECOMING COURT

## JEREMY



*Class of 2017*

*Program:  
Permanent  
Supportive  
Housing,  
Inez Killingsworth*

Jeremy works as a Resident Monitor & Group Facilitator for the Salvation Army and excels in the position. "I've never missed a day. I'll keep showing up as long as they pay!"

"I'm living the best days of my life. I love the apartment here. Sometimes I get overwhelmed with anxiety, but the FrontLine folks talk me through, never asking for anything in return. Everyone here has helped me grow and be more self-sufficient. I've strengthened my belief in myself – but I know when I need help and can ask for it."

"When I was a kid, I never felt I belonged. I always felt out of place and left out. But now I am right where God wants me to be. To think that I almost missed this by planning to walk away. I was so close to leaving 5 minutes before the miracle of my life happened."

**hd+s**

**HITI  
DIFRANCESCO  
+SIEBOLD**

**Celebrating EDEN's HOMECOMING 2023**

[www.hidisiarch.com](http://www.hidisiarch.com)

**Architecture + Interior Design + Planning**



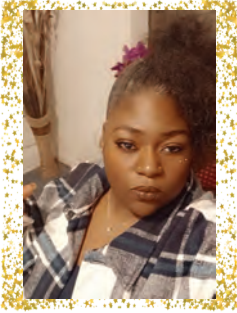
## **Drake Construction Company**

**Cleveland, Ohio**  
Since 1954  
216-664-6500



**INTEGRITY. EXPERIENCE. EXCELLENCE.**

# HOMECOMING COURT JERUSHA



*Class of 2021*

*Program:  
Permanent  
Supportive  
Housing,  
Scattered Sites*

In December 2021, Jerusha picked up all of her children and said they were going for a ride. When she pulled up to their new address, the kids were curious. "Why are we stopping here?" "This is our new home." Screaming, laughing, and lots of tears and hugging followed!

Jerusha's 5 children are thriving now that they are together in their own home. Her mom takes the kids every other weekend so she can recharge and spend time focusing on her own needs. When not working, she spends time with her kids and creates craft projects. She also enjoys writing and listening to music.

"Two years ago, I felt like I was a total failure. Self-doubt was my enemy. I now believe there is a treasure at the end of the rainbow. EDEN literally saved my life. It brought my family together. It helped me be confident in my path and gave me faith in myself. I hope more people can benefit from what EDEN offers!"





## PROUD TO SUPPORT

*Sisters of Charity Foundation of Cleveland is proud to support EDEN in its mission to provide housing solutions to people facing housing insecurities and homelessness.*

SISTERS of CHARITY  
FOUNDATION OF CLEVELAND

*A Ministry of the Sisters of Charity Health System*



**Energy Management Specialists, Inc.,  
is honored to be this year's Drum Major Sponsor.**

**Thank you to all the people of EDEN for all the  
hard work you do for the Greater Cleveland area.**

[www.EnergyMan.com](http://www.EnergyMan.com)

# HOMECOMING COURT MARYLAND



*Class of 2017*

*Program: Permanent  
Supportive Housing,  
Northridge Commons*

When Maryland became homeless, the public library became his haven. He read newspapers and books, grateful for the librarians who knew he was homeless but let him stay there to keep warm and fill his mind. At noon, he would walk to St. Augustine to have lunch. "They let you volunteer your time by preparing meals and helping out in the kitchen. I say a prayer every night for those Sisters."

He found a permanent home at Northridge Commons in 2010. He started working part-time for the Catholic Diocese's meal program for home-bound seniors on the East Side. When that closed, he applied to St. Augustine's dietary program. He has worked there full-time for 4 years, preparing, serving and delivering meals to home-bound seniors.

Maryland's days are now filled with work, friends, and people he helps every day. On his days off, he enjoys joking with EDEN staff and his fellow tenants. "I bless all the people here. Life is good at EDEN!"



# Third Federal HomeToday™

The Third Federal HomeToday program provides you with the fundamental skills you need for successful homeownership.

## Third Federal is Proud to support EDEN's Homecoming 2023

### Invest in your future.

Start the registration process for the Third Federal HomeToday™ Seminars by calling 216-441-7345 or visit [thirdfederal.com/HomeToday](http://thirdfederal.com/HomeToday)

Apply online today!



For more information about eligibility and requirements for 3% down and lowest rate guarantee, ask a branch associate, visit [thirdfederal.com](http://thirdfederal.com) or call 1-800-THIRD-FED. 3% down and down payment assistance is available for loan amounts up to \$250,000 and borrowers must meet certain income, geographic and other requirements to qualify. Product features are subject to change without notice. ©2023 Third Federal



# Swagelok

Swagelok is proud to be one of the hometown supporters of **Eden's Homecoming**, providing housing solutions to people facing the challenges of housing insecurities and homelessness.



Swagelok is an Equal Opportunity and Affirmative Action Employer.  
©2023 Swagelok Company | Solon, OH, USA | [swagelok.com](http://swagelok.com)





# HOMECOMING COURT MAURICE



*Class of 2017*

*Program:  
Permanent  
Supportive  
Housing,  
The Commons at  
West Village*

Maurice served in the army in the 1980's, stationed in Alabama and Germany. When he was discharged, he worked at the local Veterans Administration for more than 10 years in orthopedics. He considered himself an advocate for the other veterans. "I would see people stomping down the hall, angry that they weren't being heard. I fought for them, telling the doctors that they needed to take the time to really listen to what they were being told." For his efforts, he was named Employee of the Month.

Maurice spends his time taking care of others. He owns a car and often takes his neighbors to get groceries. He cleans the apartment and cooks for the gentleman in the apartment next to his. "He's nearing 70 years old and can't get around too much anymore. If I see someone in need of something, I help out. I feel it's my responsibility to make life better for others whenever I can."



**Italian  
Creations**

CELEBRATING  
28 YEARS

*There's more  
where that  
came from!*

Specializing in Italian & classical American cuisines, Italian Creations is a one-stop-shop for all of your catering needs. We truly enjoy taking the stress of party planning off of your shoulders and ensuring that you are provided with the best food & service possible for your fundraiser, wedding reception, or corporate meeting. Give us a call today!

## Italian Creations

16104 Hilliard Road  
Lakewood, OH 44107

216.226.2282

[www.ItalianCreation.com](http://www.ItalianCreation.com)  
[rosskeller4@aol.com](mailto:rosskeller4@aol.com)

**MAKE A STATEMENT AT YOUR NEXT GATHERING!**

# HOMECOMING COURT PATTY



*Class of 2016*

*Program:  
Permanent  
Supportive  
Housing,  
The Winton  
on Lorain*

Patty is known at the Winton as the tenant with the one of the most beautiful apartments in the building. When she opens the door, all you see are the double 10-foot high windows gracing the front. It is absolutely spotless. And then you are drawn to the myriad decorations, knickknacks, and artwork that reflect her personality.

"I spend most of my time at the Catholic Center, looking for all the things that will make my apartment look beautiful! I'm going to volunteer there to show how much I appreciate everything I have."

In the evening, Patty and her kitty TT Bootsie cuddle on the couch and watch television together. She experiments with recipes. She is also an avid reader.

"I feel tranquil now. I feel calm. I can now look forward to the future because I know it will be bright."





## SAINT IGNATIUS

One of Saint Ignatius' most well-known and respected traditions is our students living out their faith through a variety of service initiatives, programs and retreats. Through the ministries of the Christian Action Team, Sophomore Service, Service Immersion Trips, retreats and social justice programming, the Jesuit motto of “Men for and with Others” springs to life.

One of our most popular service programs, the Labre Ministry to the Homeless, has been meeting the needs of our friends on the streets for over 21 years. Through our close relationships with people experiencing homelessness, our young men have learned the importance of treating **all people** with dignity, respect and genuine love.

Saint Ignatius does not just prepare students academically, it prepares them for life. After four years of putting faith into action, our men are primed to do as Ignatius Loyola himself said, and “set the world on fire.”



[IGNATIUS.EDU](http://IGNATIUS.EDU)



[@SIHSCLEVELAND](https://www.instagram.com/SIHS_CLEVELAND)



# HOMECOMING COURT WANDA



*Class of 2020*

*Program:  
Community  
Transition  
Program*

Wanda now lives in the upstairs of a two-family brick home, beautifully decorated with furniture that any interior designer would envy. She fills her days with family, especially her two children and six grandchildren, along with many great-great-nieces and -nephews. "Auntie Wanda" lets the kids sleep over, teaching some to cook while the others build tents and forts in the living room.

When not with family, Wanda is active volunteering for Building Freedom for Ohio (BFO), a nonprofit focused on helping people succeed out of prison. Their mission is to help people who left prison and want to become integrated into the community. Wanda helps whenever she can, especially speaking to at-risk teens so that they don't make the same mistakes she did.

When Wanda began at EDEN, she had no credit history. Seven months ago, with the help of a cousin who agreed to co-sign, she owns a 2020 Kia. Managing her money responsibly, she now pays rent, utilities, her car payment, and insurance. She is proud of the progress she has made.



*We'll get you there.*



CPAs | CONSULTANTS | WEALTH ADVISORS

[www.CLAconnect.com](http://www.CLAconnect.com)

©2023 CliftonLarsonAllen LLP. Investment advisory services are offered through CliftonLarsonAllen Wealth Advisors, LLC, an SEC-registered investment advisor.

For more than 40 years, we've worked toward **one mission:** to make home and community places of pride, power and belonging.

Enterprise is proud to sponsor **Eden's Homecoming 2023.**



DLZ proudly **supports**  
Eden's Homecoming 2023

1.800.336.5352 // [dlz.com](http://dlz.com)

People are at the heart of what we do.



Member FDIC. © 2023 Huntington Bancshares Incorporated.



# THANK YOU TO OUR SPONSORS

AS OF SEPTEMBER 20

QUARTERBACK



**oswald**<sup>®</sup>

A **UNISON** RISK ADVISORS Company





# MJi

CONSTRUCTION

Proud supporters of  
EDEN's mission and  
continued success!

440-238-1162

Excavating • Sitework • Underground Utilities  
Demolition • Site Concrete

CHN Housing Partners thanks EDEN  
for its continued partnership!



CHN  
Housing Partners

*The Power of a Permanent Address™*

NeighborWorks  
CHARTERED MEMBER

[www.chnhousingpartners.org](http://www.chnhousingpartners.org)

# JONES DAY

Jones Day proudly supports  
Emerald Development  
and Economic Network, Inc.  
We applaud its mission to  
provide housing solutions  
to people facing the challenges  
of housing insecurities  
and homelessness.

[WWW.JONESDAY.COM](http://WWW.JONESDAY.COM)



PROUD FEMALE-OWNED  
CONSTRUCTION COMPANY  
SERVING CLEVELAND AND  
COLUMBUS SINCE 1994





## DRUM MAJOR

Drake Construction  
Company

Sisters of Charity  
Foundation of  
Cleveland

Energy Management  
Specialists, Inc.

Swagelok Company

Hiti, DiFrancesco  
and Siebold, Inc. -  
Architects

Third Federal

## CHEERLEADER



ALCA Associates

JAJA Properties

CHN Housing Partners

Jones Day

CLA  
(CliftonLarsonAllen LLP)

Huntington Bank

Cleveland Menu

Marous Brothers  
Construction

DLZ

MUI Construction

EDEN Board of Directors

Regency Construction  
Services, Inc.

EDEN Senior Management

Surety Title Agency, Inc.

Enterprise Community  
Partners



# SURETY TITLE AGENCY INC.

Since 1982, Surety Title Agency, Inc. has successfully processed over 150,000 real estate transactions for a wide variety of clients. When buying your next home or office building, ask for Surety Title.



1120 Chester Avenue, #400  
Cleveland OH 44114  
TEL: 216-589-8399  
FAX: 216-589-4826

[www.suretytitle.com](http://www.suretytitle.com)



# Strange & Spooky Cleveland Tours

Friday and Saturday evenings

Join local author and historian  
William G. Krejci  
as we visit Cleveland's  
ghostly past



[www.strangenspooky.com](http://www.strangenspooky.com)



## ALCA ASSOCIATES

**Allan L. Forsythe, President**

Telephone: (614) 794-4900

Fax: (614) 895-1823

E-mail: [aforsyth@rrohio.com](mailto:aforsyth@rrohio.com)

PHASE I ENVIRONMENTALS  
COMPREHENSIVE NEEDS  
HANDICAPPED ACCESSIBILITY

[www.ALCAassociates.com](http://www.ALCAassociates.com)



The EDEN Board of Trustees  
congratulates everyone  
associated with EDEN  
on their dedication to mission.

We are so proud and humbled to  
work alongside all of you as we  
strive to build a sturdy foundation  
for the agency—and for  
thousands of the most vulnerable  
households in our region.

# MASCOT



ADAMHS Board of Cuyahoga County	Joseph & Mary's Home
I.A. Lewin & Associates	Mistick Construction
Irene & Gary Collins	Recovery Resources
Famicos Foundation	University Settlement
FrontSteps	Welcome House, Inc.
Green Bridge Real Estate	West Roofing Systems, Inc.
	Westfield Insurance



# TABLE

Denk Associates	Lutheran Metropolitan Ministry
Judi & Chris Engel	Eric Morse & Christie Tatman-Stroh
Linda Erb	NEOCH
FrontLine Service Inc	Michael Parks
Claire Gauntner	Emma Petrie Barcelona & Rob Barcelona
Elaine Gimmel	Jon & Molly Petrus
IFF	
The Legal Aid Society of Cleveland	

Offering the perfect place to live  
in the Detroit Shoreway and  
Ohio City neighborhoods.



*Your place to call home.*



[www.JAFAProperties.com](http://www.JAFAProperties.com)  
[apartments@JAFAProperties.com](mailto:apartments@JAFAProperties.com)



PROUD TO PARTNER WITH EDEN IN  
PERMANENT SUPPORTIVE HOUSING

[www.MistickConstruction.com](http://www.MistickConstruction.com)

IA Lewin PE and Associates  
wants to congratulate  
EDEN for all its hard work



i.a. lewin & associates, llc  
structural and civil engineering

cleveland, ohio  
216.291.3131

[www.lewinandassociates.com](http://www.lewinandassociates.com)

Learn how you can help!

Transforming lives  
to end the cycle  
of homelessness.



**FRONT STEPS**

HOUSING AND SERVICES

[www.FrontStepsServices.org](http://www.FrontStepsServices.org)

**BACK  
TO HEALTH  
FORWARD  
TO HOUSING**



JOSEPH & MARY'S HOME

*A Ministry of the Sisters of Charity Health System*  
[jmh.org](http://jmh.org)



**famicos  
FOUNDATION**

*Building Homes. Restoring Hope.*

[famicos.org](http://famicos.org)  
(216) 791-6476





## HOME TEAM FANS



Allstate Hairstyling and Barber College

JACK Cleveland Casino

Ellen Kirtner-LaFleur and Zach LaFleur

Jim & Therese Sweeney Drake

Susan Licciardi

Ogletree Deakins

## BOOSTER CLUB



CHN Housing Partners

DiGeronimo Companies

Dennis & Mary Morton

North Coast Litho, Inc.

Cynthia Schumacker



## SUPPORTERS

Italian Creations

Picture Perfect Photo Booth Rentals, LLC

St. Ignatius High School

Strange & Spooky Cleveland Tours

Celebrating coming  
home with EDEN



HATS OFF TO OUR  
AMAZING PARTNERS AT  
EDEN!



West Roofing Systems, Inc.

Commercial Roofing Specialists in  
LaGrange, OH since 1979

[www.WestRoofingSystems.com](http://www.WestRoofingSystems.com)

Welcome House would like to  
congratulate EDEN on this  
very special occasion



Welcome  
House

Opening doors for people  
with developmental disabilities

[www.welcomehouseinc.org](http://www.welcomehouseinc.org) | 440-356-2330



BUILDING EXCELLENCE SINCE 1980



CONSTRUCTION MANAGEMENT GROUP  
DESIGN/BUILD GROUP  
MULTI-FAMILY HOUSING GROUP  
SPECIAL PROJECTS GROUP  
CARPENTRY & INTERIOR FINISHES GROUP  
SITE GROUP

[MAROUSBROTHERS.COM](http://MAROUSBROTHERS.COM)

36933 Vine Street | Willoughby, OH 44094  
440.951.3904



WE CRAFT MENUS THAT MAKE  
YOUR RESTAURANT THRIVE

Specializing in the design and  
production of high quality  
printed, leather, metal, copper,  
aluminum and wood menus.

Check out our distinctive  
portfolio on our website:  
[www.ClevelandMenu.com](http://www.ClevelandMenu.com)

MENUCRAFT IS ALL WE DO

# PRIZE DONORS



Beth Adams	Gervasi Vineyard
Akron Fossils and Science Center	Elaine Gimmel
Shalesha Andrews	Herman's Furniture & Design
Angelo's Pizza	Home Depot
Anonymous	JACK Cleveland Casino
Batteries + Bulbs	Ellen Kirtner-LaFleur
Jessie Beck	Andy Klek
Busy Bees Potter & Arts Studio	Gerri Kornblut
Richard Carr	Longhorn - Independence
Cleveland Zoo	Lowe's
Cleveland Guardians	Laurel Martinson
Cleveland Monsters	MaxStrength Fitness
Cleveland Orchestra	Rachel Miskimins
Kasana Craddock	Mitchell's Ice cream
Julie Demor	Eric Morse & Christie Tatman-Stroh
EDEN Board of Directors	My Time Skin & Nails
EDEN Leadership Team	Oak Barrel Brasserie & Tapouse
Judi & Chris Engel	Olive Garden
Linda Erb	Pearle Vision
Fast Eddie's	Petland Parma - Parma Town



EDEN's Senior Management Team congratulates its staff, trustees, community partners, and stakeholders!

*Elaine Gimmel  
Sharon Parks  
Emma Petrie Barcelona  
Mark Baynes  
Jessie Beck  
Richard Carr  
Judi Engel  
Ellen Kirtner-LaFleur  
Gerri Kornblut  
Khaz Ra'el  
Megan Russo  
Rachella Tillman*

VALUE BEYOND THE INSURANCE POLICY

  
WESTFIELD

175  
YEARS

[www.WestfieldInsurance.com](http://www.WestfieldInsurance.com)

Apartment / Multi-Family Building Sales

Green Bridge Real Estate is honored to have Matthew S. King serving on the Board of Directors of EDEN

**Matthew S. King, CCIM**  
mking@greenbridgerealestate.com  
440.552.5858

  
[www.clearpartments.com](http://www.clearpartments.com)



[www.pictureperfectohio.com](http://www.pictureperfectohio.com)



# PRIZE DONORS



Michelle Pollock

Susan Stevens

Pulp Juice and Smoothie Bar  
- Parma Town

Stella Luna Counseling  
& Wellness Center

Quaker State & Lube Valley View Strange & Spooky Cleveland Tours

Khaz Rael

Synergy Woods Paintball Park

Rock and Roll Hall of Fame  
Museum

Tales Unlimited, LLC

Lori Ross

Sarah Thomas

Teresa Thomas

Mike Rudolph

Rachella Tillman

Megan Russo

Viking Bags

Santa Rosa Stitches

Walls of Books - Parma Town

Roger Shaw

Lynn Walsh

Jacque Skrzypiec

The Wick Life Candle Company

Sports Clips of Parma

Donna Withee

**Congratulations to EDEN  
for your wonderful work  
bringing people home!**

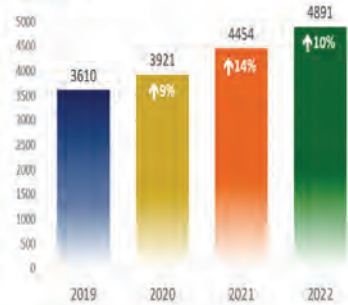
*Irene & Gary Collins*

# Clients Served in 2022

## Households Served – Historical Analysis

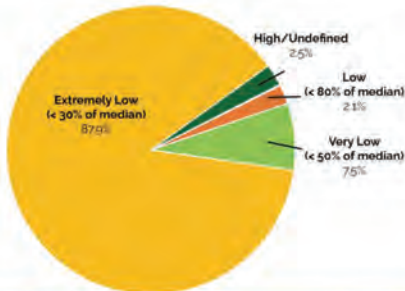
In 2022, EDEN served 4,891 Households/8,420 Individuals

Project Type	2019	2020	2021	2022
Permanent Voucher Projects (Non-PSH)	1838	2000	2441	2589
Temporary Voucher Projects (RRH, EP)	747	849	863	996
PSH Buildings	728	765	800	874
EDEN-Owned Scattered Sites	178	190	195	195
Group Homes	69	73	86	82
ADAMHS Board-Owned Properties	8	6	8	5
HUD Properties	42	38	35	34
Sponsor-Based Rental Assistance				116
<b>TOTAL</b>	<b>3,610</b>	<b>3,921</b>	<b>4,454</b>	<b>4,891</b>
<b>Percent Increase</b>		<b>108.6%</b>	<b>113.6%</b>	<b>109.8%</b>



## Income Level

97.5% of Households Do Not Exceed 80% of Median Income



Income Level	# Households
High (median or higher)	7
Low (do not exceed 80% of median)	103
Very Low (do not exceed 50% of median)	366
Extremely Low (do not exceed 30% of median)	4,298
Undefined	117
<b>Total</b>	<b>4,891</b>

## Special Populations

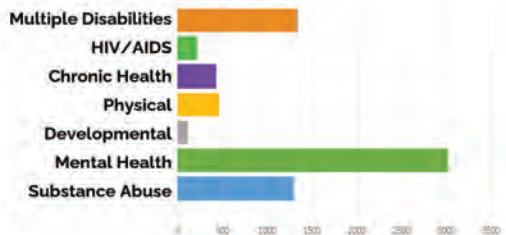
8,420 Individuals



## Types of Disabilities

77% of Heads of Household Have One or More Disabilities

Disability Type	# Heads of Household
Substance Abuse	1,291
Mental Health	3,013
Developmental	114
Physical	456
Chronic Health	427
HIV/AIDS	215
Multiple Disabilities	1,338





# TONIGHT'S ACTIVITIES RAFFLE PRIZES

Drawings start at 9:15

See [www.EDENcle.org/raffle](http://www.EDENcle.org/raffle) for the list of prizes, including the value, description, and picture of each one.

Prizes have been divided into three tiers:

- **Tier 1:** These prizes are worth AT LEAST \$500! Cost of these tickets are \$20 each or a SET OF SIX for \$100.
- **Tier 2:** These prizes are worth anywhere between \$200 and \$499! Cost of these tickets are \$10 each or a SET OF SIX for \$50.
- **Tier 3:** These prizes are worth anywhere between \$50 and \$199. Cost of these tickets are \$5 each or a SET OF FIVE for \$20.

Purchase the tickets at the raffle prize tables (gray tablecloths).

We accept the following payment types:

- Cash
- Checks
- Venmo (@EDEN-cle)\*
- Credit cards (via the Paypal app; see QR code at the back of this program)

*\* Show staff the receipt  
on your phone  
to get your tickets*



# Real Estate & Development

## 2022 Expansion Projects

EDEN is committed to maintaining and expanding its property portfolio in order to meet the increasing need for affordable housing.

*Below:* Bridge Pointe Commons, a three-story Permanent Supportive Housing (PSH) building of 62 furnished, one-bedroom apartments in Elyria for individuals.



**Housing for families ...**

*Left:* Guthrie House, an accessible two-bedroom home.

*Below Left:* The Madison Townhomes, four two-bedroom apartments.

*Below right:* Three-bedroom duplex units on East 162nd Street.





## TONIGHT'S ACTIVITIES

# 50 / 50 RAFFLE

We will sell single tickets for \$20 and sets of six tickets for \$100. There is no limit to the number of tickets to be sold. 50% of the proceeds will go toward EDEN's programs, and 50% will go to the person who purchased the winning ticket.

- If we sell 300 tickets at \$20 each, 50% of  $\$20 \times 300$  tickets = a \$3,000 prize!
- If we sell 450 tickets at \$20 each, 50% of  $\$20 \times 450$  tickets = a \$4,500 prize
- If we sell 600 tickets at \$20 each, 50% of  $\$20 \times 600$  tickets = a \$6,000 prize!

Purchase your tickets at the Registration Desk using cash, check, the PayPal app (see the QR code on the back of this program), or Venmo.

The drawing will be held tonight after the prize raffle tickets have been drawn, and all 50-50 tickets must be purchased by then.

You do not need to be present to win. If we call your number and you are not at the event, we will mail you a check after informing you of your winnings.

Questions? See Jacquie at the Registration Desk

# Welcome Home

In 2022, EDEN completed its Expansion Phase I project, which is new affordable housing for unhoused families referred through Coordinated Entry. The project features 7 units of newly constructed 2- and 3-bedroom homes. Five units are located near EDEN's headquarters, including 4 townhomes and one single family 3-bedroom house with accommodations for mobility impairment. Two units in a duplex setting were also constructed on Cleveland's east side. As unhoused households making the transition to housing do not typically own items like furniture, bedding, dishes, and other items necessary to live in and maintain a home, EDEN was thrilled to partner with Humble Design Cleveland ([www.humbledesign.org/cleveland](http://www.humbledesign.org/cleveland)) to welcome these families to their beautiful new homes in time for the holidays.







# TONIGHT'S ACTIVITIES

# PHOTO BOOTH

Commemorate the evening with a photo  
of you and your friends!

- Have fun with the props!
- Take your FREE 4 x 6 photo(s) with you!
- Your photos will also upload to EDEN's Facebook page at [www.Facebook.com/EDENcLe](http://www.Facebook.com/EDENcLe).
- Be sure visit [www.Facebook.com/EDENcLe](http://www.Facebook.com/EDENcLe) later to tag it with your name(s) and download the electronic files.
- If you do not use Facebook, tell Jacquie at the Registration Desk and she will forward your picture files to you on Monday.



**PICTURE PERFECT**

★ ★ ★ ★ ★  
EVENT SERVICES

# EDEN's History

## Housing Solutions for Northeast Ohio

EDEN was incorporated in 1991. Its primary goals were providing, operating, and advocating for affordable housing opportunities for low-income persons living with disabilities and who may be experiencing homelessness.

What began as one residential care facility in Cleveland Heights, has grown over the past 32 years. EDEN now owns and manages more than 250 units of scattered-site housing for individuals and families who have a household member with a mental illness and/or substance use disorder.

Our Permanent Supportive Housing for chronically homeless individuals includes 800 units in 13 buildings; two additional buildings are currently in development, one for young adults aged 18-24 (TAY); one for seniors aged 65 and older; and Broadway Commons in Lorain. The agency also owns Norma Herr Women's Center, which is the primary shelter in Cuyahoga County for single adult women.

EDEN administers rental assistance for more than 3,600 households per month, focusing mainly on persons with disabilities and those who are homeless. This includes single individuals, families, and citizens re-entering our community from institutions. EDEN is also the primary provider of the Rapid Re-Housing Program (time-limited rental assistance) in Cuyahoga County.

In 2022, EDEN provided housing solutions to 4,891 households (8,420 individuals) who otherwise would have been homeless in the Metropolitan Cleveland Region. We strive to maintain and innovate our operations so that we can continue to provide a place to call home for our neighbors in need.



## EDEN's Mission

EDEN's mission is to provide housing solutions to people facing the challenges of housing insecurities and homelessness.

## EDEN's Vision

EDEN recognizes that housing is a basic right of all people, and the first step in helping persons transform their lives.

We envision that, through our efforts, homelessness will be brief and rare; and every household will have a safe, secure place to call home.

We believe housing serves as a foundation to build stable lives, advance independence, and fulfill aspirations.

## EDEN's Values

### Communication

We are committed to communicate in a transparent, open, respectful, and timely manner in all communications.

### Respect

EDEN will strive to accept and appreciate the individuality of people, their opinions and background. We must listen to and learn from one another, and then work collaboratively to integrate new ideas, practices, and philosophies in pursuing EDEN's mission.

### Teamwork

EDEN's staff will work together to achieve a supportive and cohesive team environment of shared responsibility.

### Empowerment

We encourage and value the input of all EDEN's employees. We seek input from all levels in the process of developing right decisions for the overall good of the organization.

### Good Will

EDEN will create an environment where humor, when used appropriately, is an effective way to contribute to an enjoyable, positive work atmosphere.

### Trust

We are committed to providing an open and honest environment which builds trust and strengthens relationships.

### Accountability

With clear expectations, we will strive for successful outcomes for ourselves and each other, through accountability and responsive cooperation across all organizational levels and areas of operation.

### Inclusion

We value equity, inclusion, and dignity for all. We strive for excellence and recognize that our differences make us stronger. We respect and seek out inclusion of differences, realizing we can learn from each other.



*From start to finish...  
and everything in between*



- Digital Prepress
- Full Service Printing
- Full Bindery and Finishing
- Direct Mail

**North Coast Litho, Inc.**  
**(216) 881-1952**

4701 Manufacturing Ave.  
Cleveland, Ohio 44135

Fax: (216) 881-4432

Email: [ncl@northcoastlitho.com](mailto:ncl@northcoastlitho.com)

*Thank you  
for your  
support!*



[www.EDENcle.org](http://www.EDENcle.org)





EDEN, Inc.

EDEN is a nonprofit organization whose mission is to provide housing solutions to people facing the challenges of housing insecurities and homelessness.

[www.EDENcle.org](http://www.EDENcle.org)

7812 Madison Avenue, Cleveland, OH 44102

© 2023. All rights reserved.



Photo by Wonderhouse Films